

Summary Report

Job Information

Customer Name: ACME
Work Order: 123
Technician ID: 55231
Test Location: LIBERTY LAKE

Test Plan

Fiber Inspection	Cable: LTE 700 Alpha Sector Lower Connector: LC UPC	Fail
	test_2018-10-09T17.58.48.pdf	Fail
Fiber Inspection	Cable: LTE 700 Alpha Sector Upper Connector: LC UPC	Fail
	test_2018-10-09T17.59.24.pdf	Fail
OTDR	Cable Id: ALPHA Fiber Id: Fiber Number: 11	Pass
	0111310ALPHA_011_1310_OE.sor	Pass
	0111310ALPHA_011_1310_OE.sor.pdf	Pass
CPRI Check	Band: 700 Radio: LTE 700 Alpha Sector	Fail
	700-LTE-ALPHA.pdf	Fail

Fiber Inspection and Test Report

Technician: 55231
 Customer: ACME
 Location: LIBERTY LAKE

Fiber Information

10/9/18 5:58 PM

Job:	123	FAIL
Cable:	LTE 700 Alpha Sector Lower	
Connector:	LC UPC	

Inspection Summary

Profile: SM UPC (IEC-61300-3-35 Ed. 2.0)

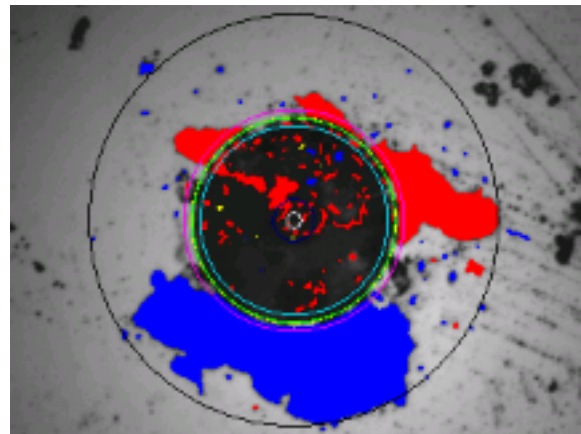
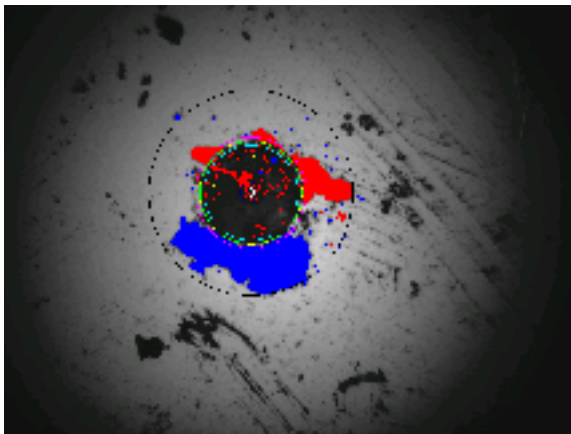
Tip: Standard Tips (with BAP1)

	DEFECTS				SCRATCHES			
	Criteria	Threshold	Count	Result	Criteria	Threshold	Count	Result
Zone A 0µm - 25µm	> or = 0µm	0	11	FAIL	> or = 0µm	0	0	PASS
	< or = 2µm	any	7		< or = 3µm	any	0	
Zone B 25µm - 115µm	2µm<x<=5µm	5	22	FAIL	> 3µm	0	0	PASS
	> 5µm	0	40					
Zone C 115µm - 135µm				PASS				PASS
Zone D 135µm - 250µm	< or = 10µm	any	41	FAIL				PASS
	> 10µm	0	10					

FOCUS

LOW MAGNIFICATION

HIGH MAGNIFICATION



Fiber Inspection and Test Report

Technician: 55231
 Customer: ACME
 Location: LIBERTY LAKE

Fiber Information

10/9/18 5:59 PM

Job:	123	FAIL
Cable:	LTE 700 Alpha Sector Upper	
Connector:	LC UPC	

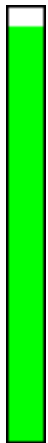
Inspection Summary

Profile: SM UPC (IEC-61300-3-35 Ed. 2.0)

Tip: Standard Tips (with BAP1)

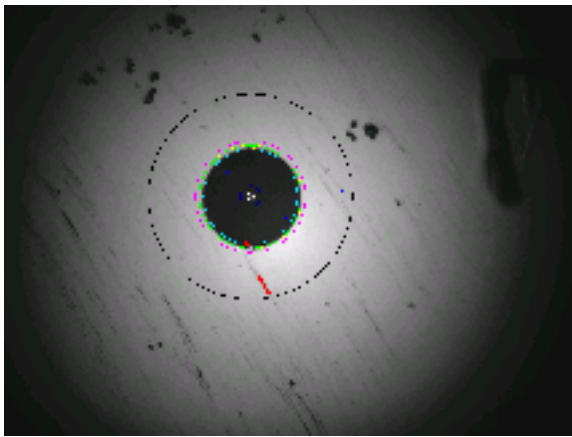
	DEFECTS				SCRATCHES			
	Criteria	Threshold	Count	Result	Criteria	Threshold	Count	Result
Zone A 0µm - 25µm				PASS				PASS
	> or = 0µm	0	0		> or = 0µm	0	0	
Zone B 25µm - 115µm	< or = 2µm	any	0	FAIL	< or = 3µm	any	0	PASS
	2µm<x<=5µm	5	4		> 3µm	0	0	
	> 5µm	0	1					
Zone C 115µm - 135µm				PASS				PASS
Zone D 135µm - 250µm	< or = 10µm	any	4	FAIL				PASS
	> 10µm	0	1					

FOCUS

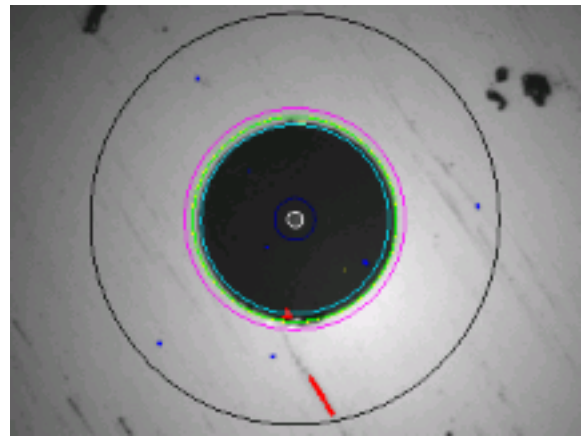


94

LOW MAGNIFICATION



HIGH MAGNIFICATION





Cable Id : ALPHA
Location A :
Job Id :

Fiber Id : 11
Location B :
Technician Id :

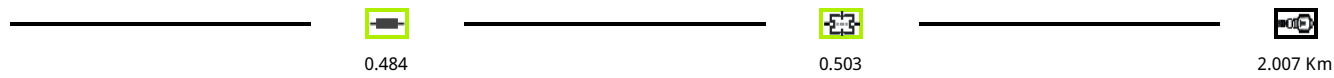


MTS 4000 (S/N 169)

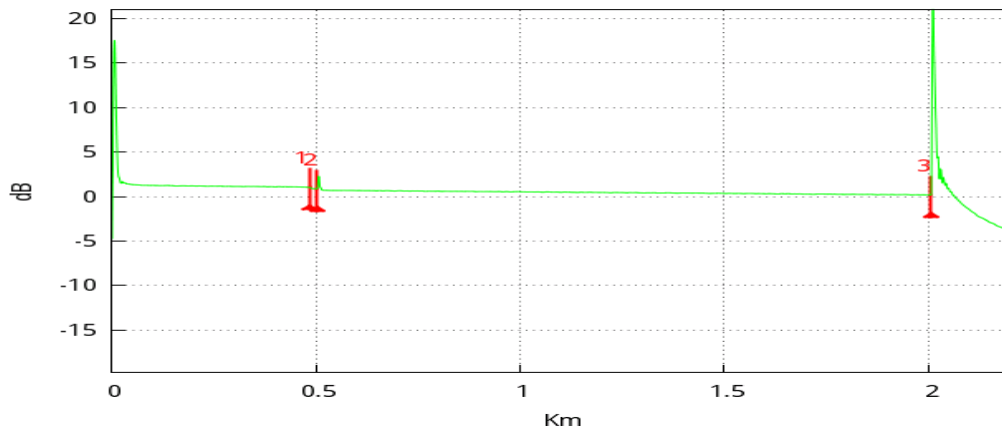
4126 LM (S/N 102)

Date : 11/26/2008 10:48 am

Setup	1310nm	30ns	5km	64cm	180.0s	1.46500(USER 1)	-79.0 dB	
Alarms								
Thresholds	Default				Splice Loss (dB)	>0.20	Slope (dB/Km)	>1.00
Connector Loss (dB)	>0.50				ORL (dB)	<27		
Reflectance (dB)	>-35							
Summary								
Filename	Laser nm	Link Loss dB	Link Orl dB	Fiber End Km	Direction	Event	Alarms	
0111310ALPHA_011_1310_OE.sor	1310	1.130	37.86	2.007	A->B	3	✓	



OTDR 1310nm



Event	Distance	Loss	Reflect.	Slope	Section	T. Loss
	Km	dB	dB	dB/km	Km	dB
1	0.484	0.176		0.536	0.484	0.254
2	0.503	0.176	-64.78		0.019	0.431
3	2.007		-21.56	0.347	1.505	1.130

Generated by Viavi 5800v2



VIAMI Solutions

CPRI Check

CPRI Check Overall Test Result: Fail

	SFP Check		
	Interface		
	Start-up Sequence		
	RTD		
	RRH Identification		
	RET		
	VSWR		
	Diversity Imbalance		
	PIM Detection		

Customer Name	ACME
Technician ID	55231
Test Location	LIBERTY LAKE
Work Order	123
Comments/Notes	--
Instrument	MTS5800V2
Serial Number	XXXX0000000000

CPRI Check Report - Port 1: Rates 1-7 CPRI Layer 2 BERT Term

SW Version	26.3.0
Radio	LTE 700 Alpha Sector
Band	700
Start Time	10/09/2018 4:16:36 PM EDT
End Time	10/09/2018 4:20:08 PM EDT

CPRI Check: Local SFP Parameters	
Test Verdict	Pass
Wavelength (nm)	850.00
SFP Vendor	JDSU
SFP Vendor P/N	PLRXPLVCSH423N
SFP Vendor S/N	CD44VK0YM
SFP Vendor Rev	2
Diagnostic Monitoring	1
Diagnostic Byte	104
Nominal Bit Rate (Mbits/sec)	8500
Minimum Bit Rate (Mbits/sec)	0
Maximum Bit Rate (Mbits/sec)	0
Power Level Type	Average Power
Max Tx Level (dBm)	-1.50028
Max Rx Level (dBm)	0.999913
Transceiver	FC Link Length Intermediate; FC Tx Tech SN; FC Trans Media M6; FC Trans Media M5; FC 800 MBytes/Sec; FC 400 MBytes/Sec; FC 200 MBytes/Sec

CPRI Check: Interface Results	
Test Verdict	Pass
CPRI Rate	Rate 3: 2457.6M
Signal Present	Pass
Sync Acquired	Pass
Rx Freq Max Deviation (ppm)	0.0016276
Code Violations	0
Optical Rx Level (dBm)	-5.48674
Optical Rx Level Max. Limit (dBm)	0.0
Optical Rx Level Min. Limit (dBm)	-18.0

Test Duration	12s
---------------	-----

CPRI Check: Start-up Sequence Results	
Test Verdict	Pass
Start-up State	Operation
Frame Sync	Pass
Test Duration	12s

CPRI Check: RTD Results	
Test Verdict	Pass
Round Trip Delay Avg (us)	0.4111
Round Trip Delay Max. Limit (us)	250.000
Test Duration	12s

CPRI Check: RRH Identification	
Test Verdict	Pass
RRH Connection	Pass
Manufacturer	ALLU
Model	RRH2x40-07L-AT
Serial Number	15W362G40113
Software Version	8684135
OEM Version	0
IF Version	405
Number of Tx Antennas	2
Number of Rx Antennas	2
VSWR Floor (dBm)	20
Max Tx Power (dBm)	46.0
Min Tx Frequency (MHz)	729.00
Max Tx Frequency (MHz)	745.20
Min Rx Frequency (MHz)	699.00
Max Rx Frequency (MHz)	715.20

CPRI Check: RRH SFP Parameters	
Wavelength (nm)	850.00
Vendor	FINISAR CORP.
Vendor PN	FTLF8519P3BTL-AW
Vendor Rev	A
Power Level Type	Average Power
Diagnostic Monitoring	1
Diagnostic Byte	88
Nominal Rate (Mbits/sec)	3100
Min Rate (Mbits/sec)	0
Max Rate (Mbits/sec)	0
Transceiver	Ethernet 1000BASE-SX
Optical Rx Level (dBm)	-2.8

CPRI Check: RRH Configuration	
Bandwidth	10 MHz
Tx Frequency (MHz)	739.000
Max. Tx Power (dBm)	40.0
Waveform	LTE-FDD TM3.1
Swap I and Q	No
Rx Frequency (MHz)	709.000

CPRI Check: RET Test	
Test Verdict	Fail
ALD Scan Verdict	Pass
ALD #1	00000000000041002
ALD #2	00000000000041026

CPRI Check: RET Test - ALD #1	
ALD Verdict	Pass
AISG Serial Number	00000000000041002
AISG Type	RET

AISG Model Name	CSS RET-200____
Manufacturer	CC
Alarms Present	OFF

CPRI Check: RET Test - ALD #2	
ALD Verdict	Fail
AISG Serial Number	00000000000041026
AISG Type	RET
AISG Model Name	CSS RET-200____
Manufacturer	CC
Alarms Present	ON
Not Calibrated	ON

CPRI Check: RET Test - Antenna #1	
Tilt Test Verdict	Pass
ALD	1
Serial Number	000
Model Name	X7C-665-VR0
Base Station ID	Viavi
Sector ID	ret
Current Tilt (deg)	6.0
Minimum Tilt (deg)	0.0
Maximum Tilt (deg)	10.0

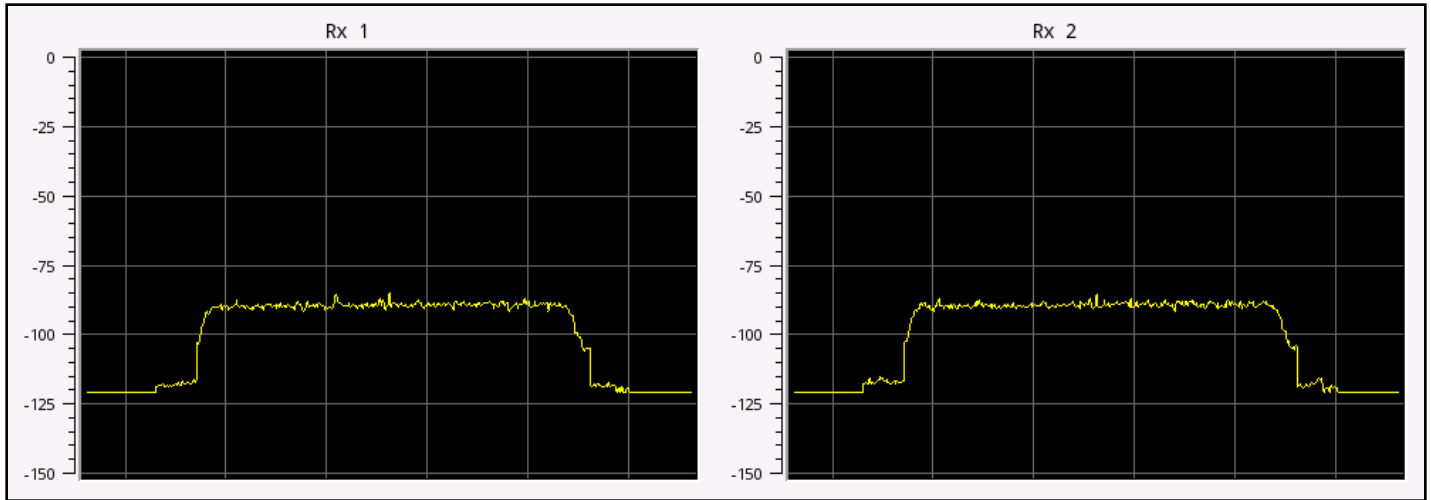
CPRI Check: RET Test - Antenna #2	
Tilt Test Verdict	Fail
ALD	2
Serial Number	000
Model Name	X7C-665-VR0
Base Station ID	VIAVI
Sector ID	Gamma
Current Tilt (deg)	Unavailable

Minimum Tilt (deg)	0.0
Maximum Tilt (deg)	10.0

CPRI Check: VSWR Test	
Test Verdict	Pass
Carrier Enabled	Pass
VSWR Floor (dBm)	Unavailable
Antenna Tx1 VSWR	1.065
Antenna Tx1 Power (dBm)	31.7
Antenna Tx1 Incident Power (dBm)	31.9
Antenna Tx1 Reflected Power (dBm)	1.9
Antenna Tx1 Return Loss (dB)	30
Antenna Tx2 VSWR	1.065
Antenna Tx2 Power (dBm)	31.8
Antenna Tx2 Incident Power (dBm)	31.9
Antenna Tx2 Reflected Power (dBm)	1.9
Antenna Tx2 Return Loss (dB)	30
VSWR Threshold	2.0

CPRI Check: Diversity Imbalance Test	
Test Verdict	Pass
Carrier Enabled	Pass
Antenna Rx1 Relative Power (dB)	0.00
Antenna Rx2 Relative Power (dB)	0.10
Antenna Rx1 AxC RSSI (dBm)	-103.00
Antenna Rx2 AxC RSSI (dBm)	-102.80
Diversity Threshold (dB)	3.0
Floor (dBm)	-100.0

CPRI Check: Spectrum (Diversity Imbalance)



CPRI Check: PIM Detection Test	
Test Verdict	Pass
Carrier Enabled	Pass
Signal Level	Pass
Antenna Rx1 Level Difference (dB)	0.65
Antenna Rx2 Level Difference (dB)	0.65
PIM Threshold (dB)	5.0
Bandwidth Percent	80.0

